




Tixotrofia: Conceitos e Potencialidades

Eugênio José Zoqui

DEF-FEM-Unicamp

zoqui@fem.unicamp.br

A red horizontal scale bar is located in the bottom right corner of the slide. It has vertical tick marks at both ends and is positioned above the text '500 µm'.

500 µm

Tixoconformação



Bibliografia Básica:

- Apelian, D., Jorstad, J., Flemings, M.C., dasGupta, R., Figueiredo, A., Alexandrou, A., Udvardy, S., *Science and Technology of Semi-Solid Metal Processing*, Ed. The North American Die Casting Association, e Ed WPI, 2001 .
- Young, K. P., *Semi-Solid Processing*, Ed. Kluwer Academic Publishers, October, 2000, ISBN: 0412619806.
- Tsuchiya, M., Ueno, H. e Takagi, I., *Research of semi solid casting of iron*, JSAE Review 24 (2003) 205–214.

Tixoconformação

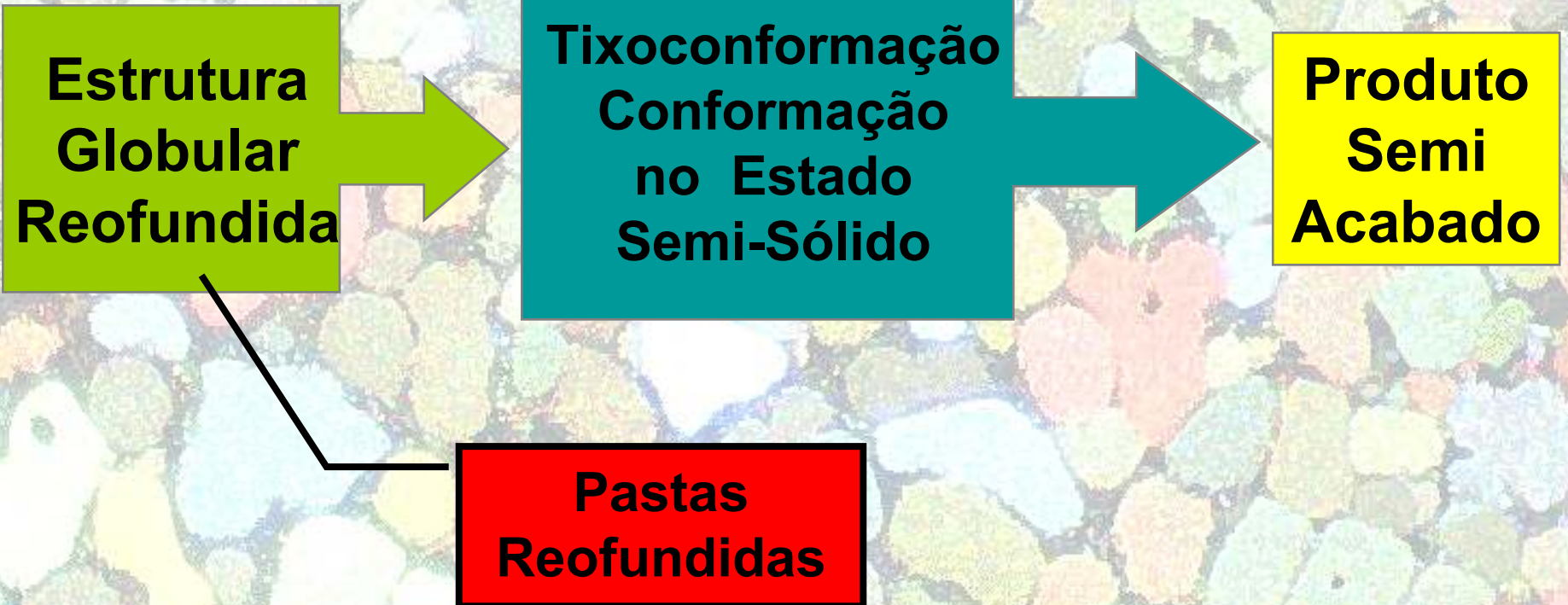


Tixoconformação:

- **Tixoforjamento: Matrizes Abertas e Fechadas com Alta Fração Sólida.**
- **Tixo-extrusão: Matrizes Fechadas com Alta Fração Sólida.**
- **Tixo-injeção: Matrizes Fechadas com Baixa Fração Sólida.**



Tixocoformação



500 μm

Tixoconformação

- Produtos Tixoconformados:

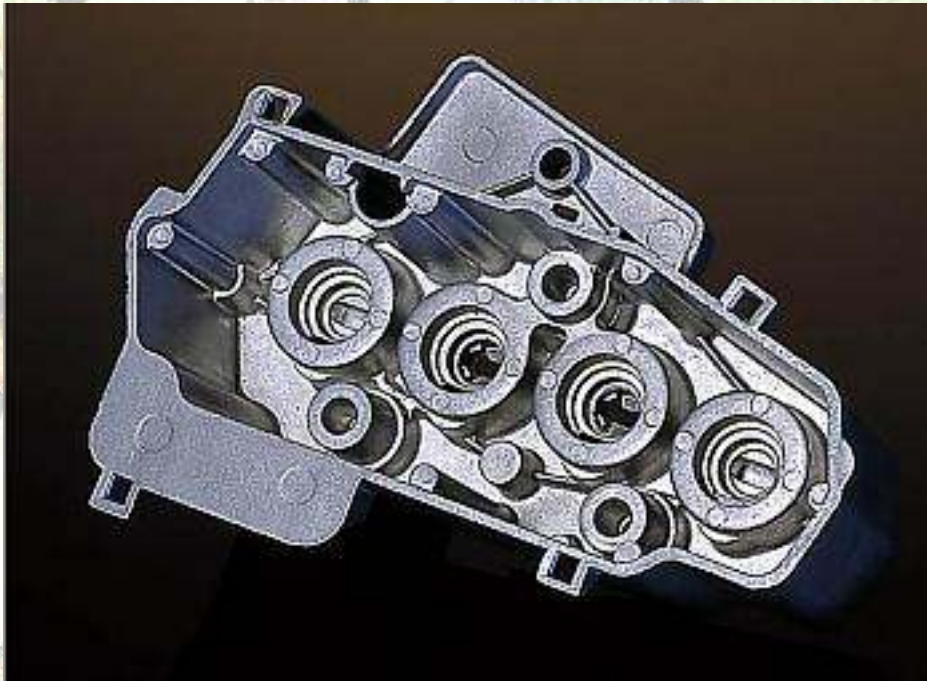


500 μ m

Tixoconformação:



- **Produtos Tixoconformados:**



500 μm

Tixocoformação

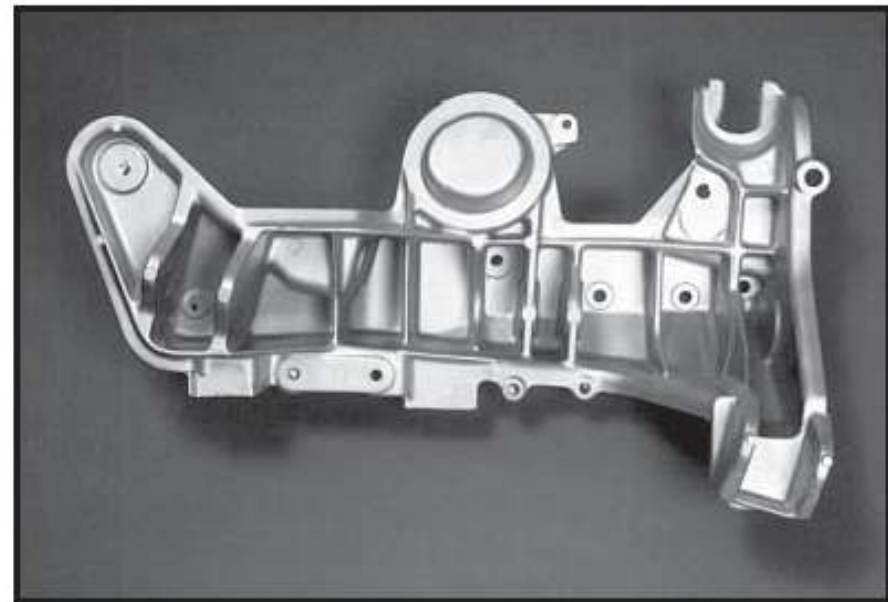


- **Produtos**

Tixocoformados:

Semi-Solid Metal Castings

Part Name:	Multi-Link
Application:	Rear Suspension Support
Part Weight:	15.0 lbs.
Alloy:	A356
Heat Treatment:	T5
Special Requirements:	Low weight, high strength
New Part or Substitution:	New Part
Customer:	Alfa Romeo



Nadca, 2006

500 μ m

Tixoconformação



- **Produtos**

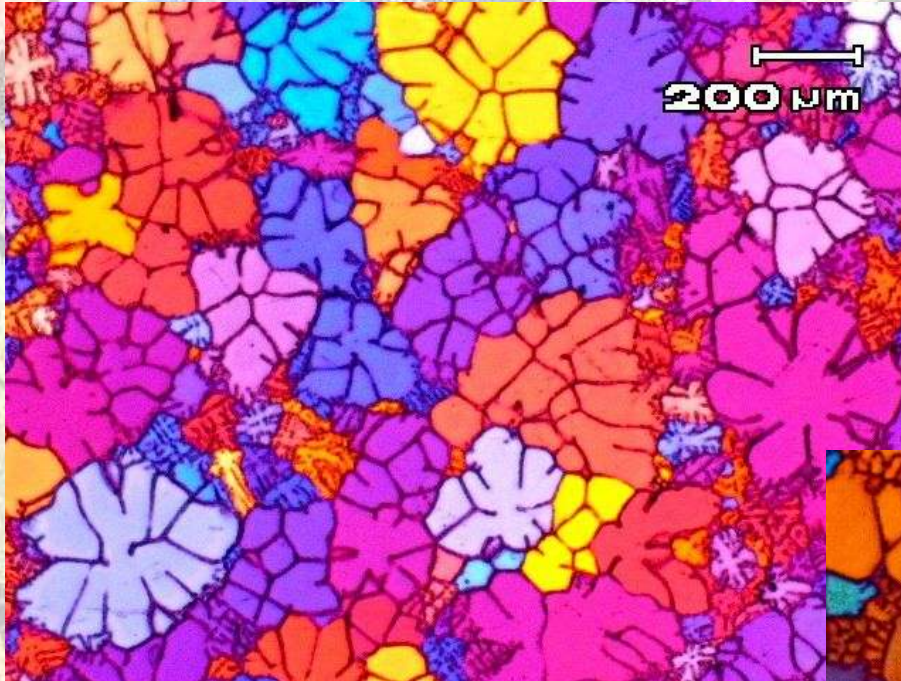
Tixoconformados:

Semi-Solid Metal Castings

Part Name:	Steering Knuckle
Application:	Automotive
Part Weight:	4.8 lbs.
Alloy:	357
Heat Treatment:	T5
Special Requirements:	Low weight, high strength
New Part or Substitution:	Substitution of cast iron
Customer:	Alfa Romeo



Tixocoformação



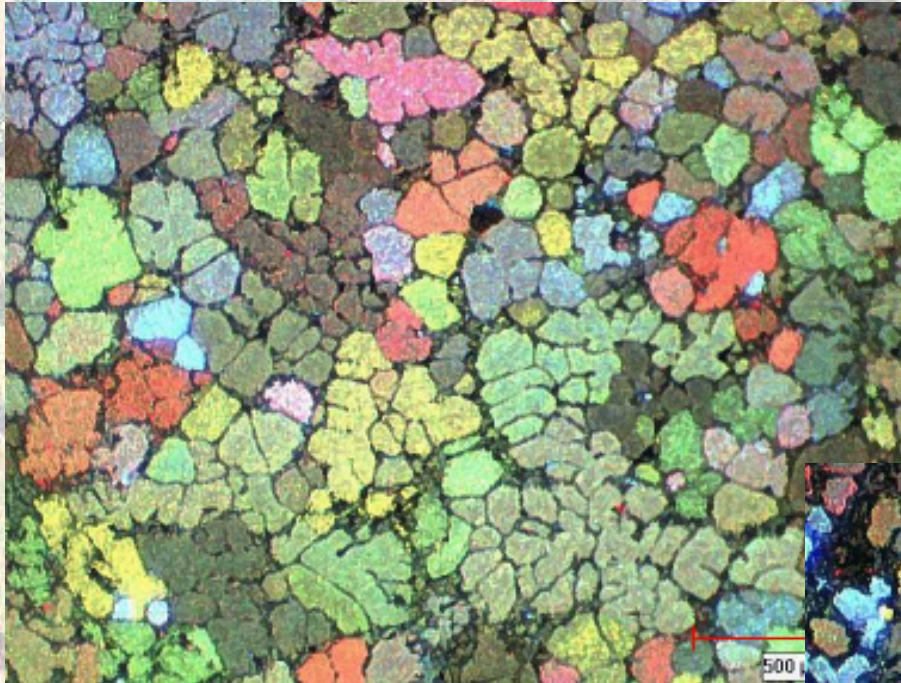
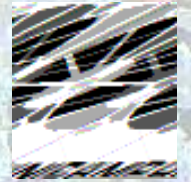
Al-0,6wt%Si-0,4wt%Mg
← Refinada

Al-0,6wt%Si-0,4wt%Mg
Agitação Eletromagnética →



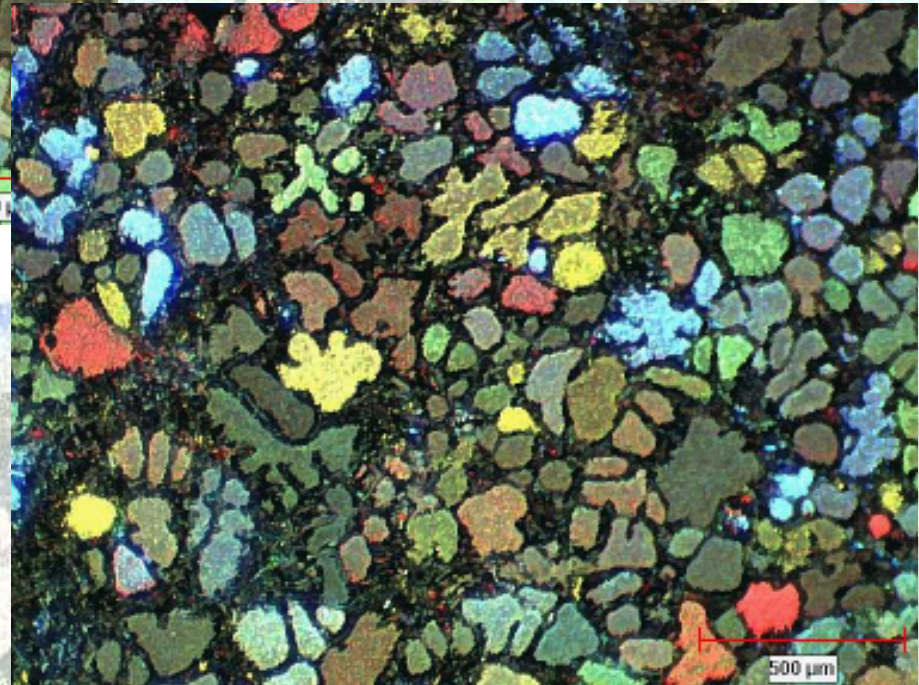
500 μm

Tixocoformação



Al-6,5wt%Si-0,4wt%Mg
← Refinada

Al-6,5wt%Si-0,4wt%Mg
Agitação Eletromagnética →



500 μm

Tixoconformação



Tixoconformação: Obtenção



500 μm

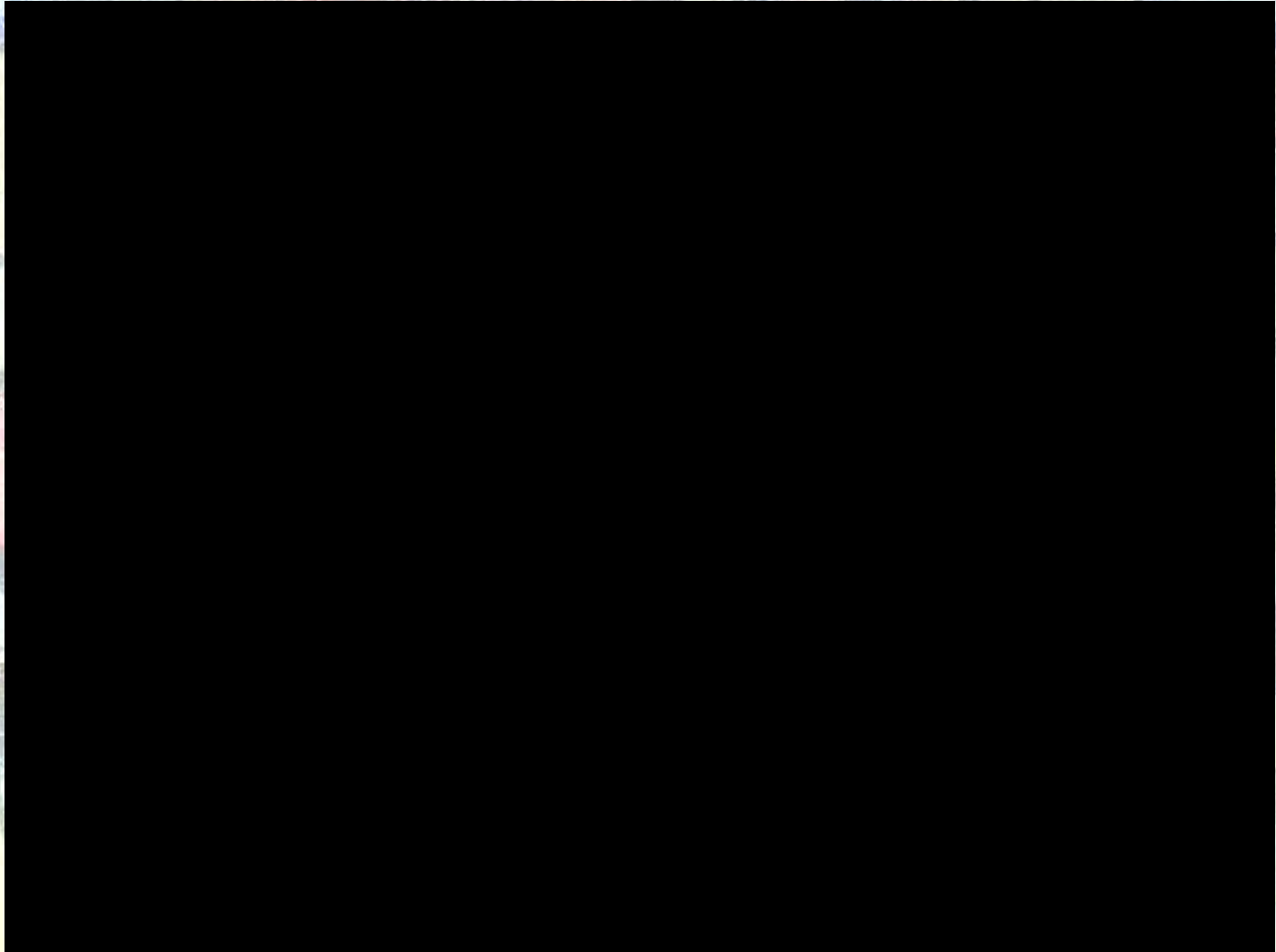
Tixoconformação



Sistema de Lingotamento Semi-Contínuo c/ Agitação Eletromagnética

500 μm

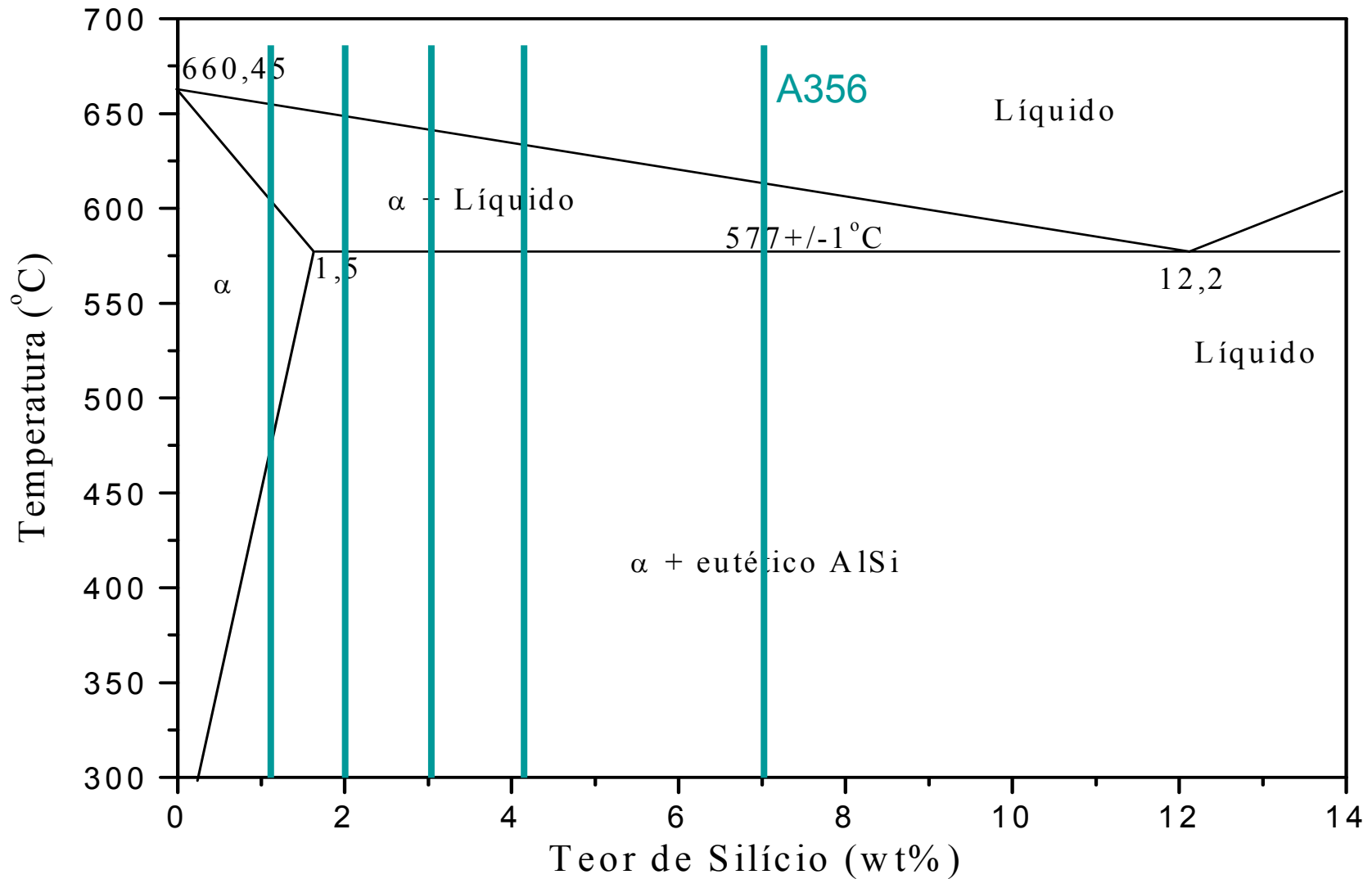
Tixoconformação



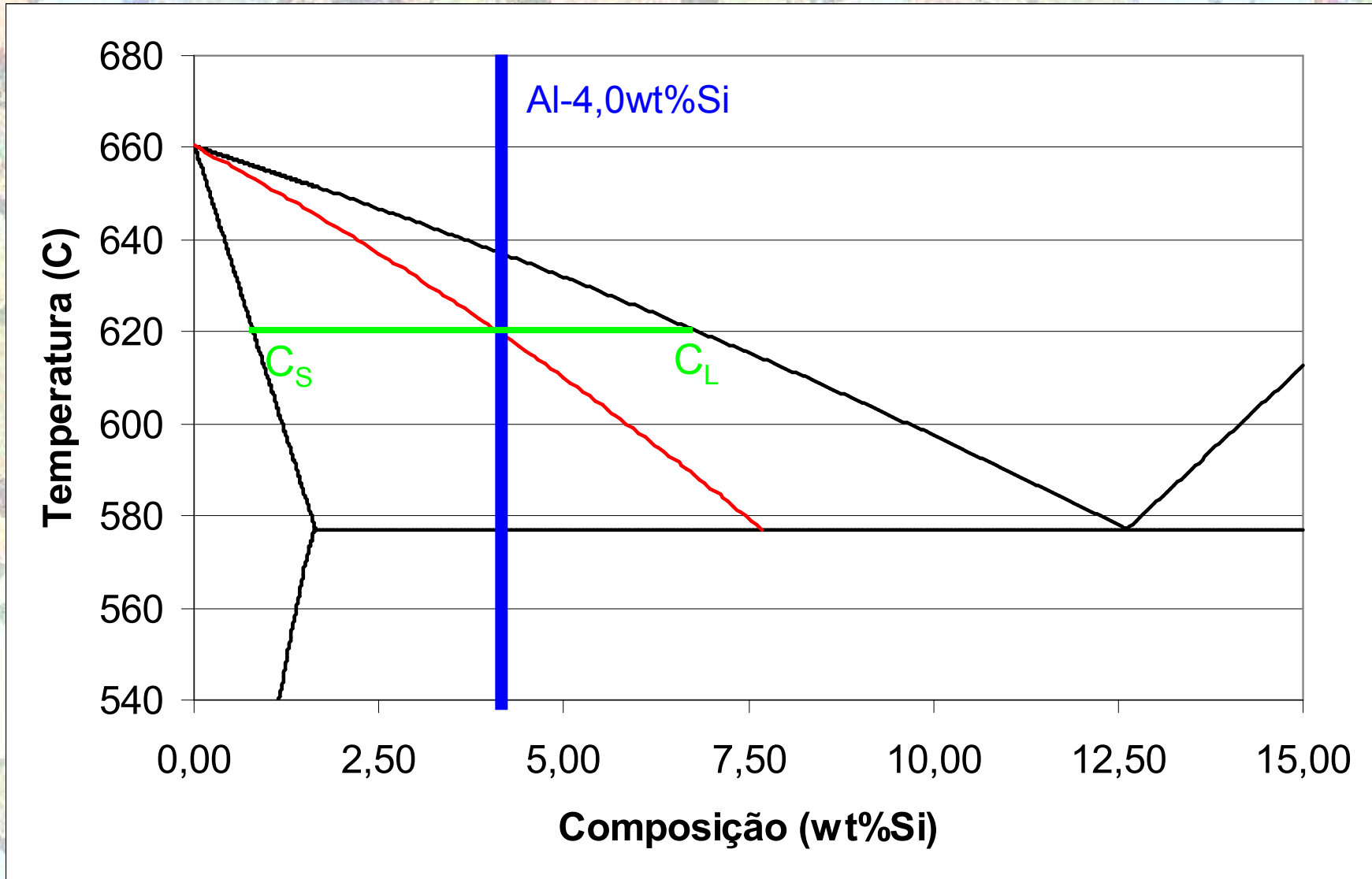
Sistema de Lingotamento Semi-Contínuo c/ Agitação Eletromagnética

500 μm

Diagrama Al-Si

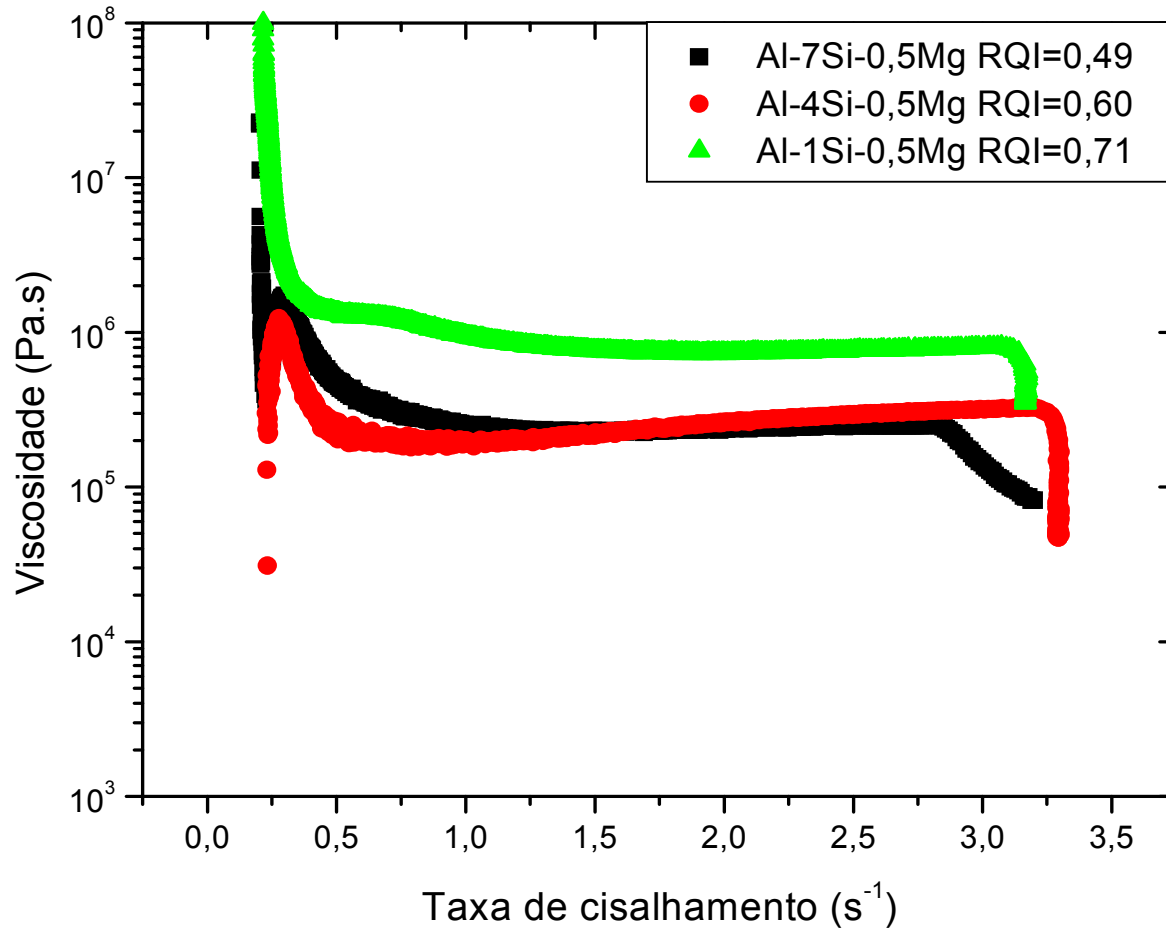


Tixoconformação



500 μ m

Tixocoformação



← Argila

← Melaço

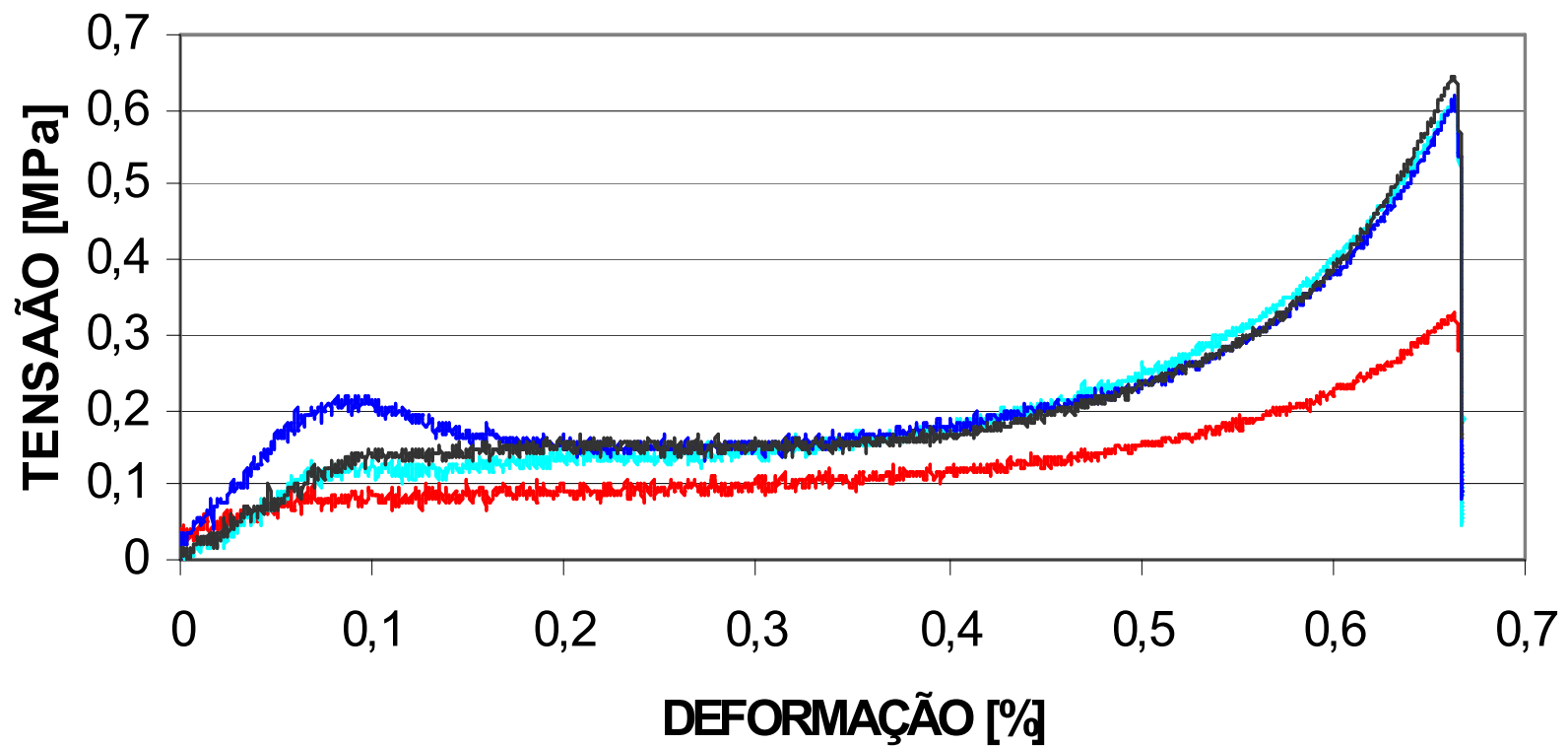
Ligas Al-xwt%Si-0,5wt%Mg a 580°C ~ 45fs



Tixocoformação



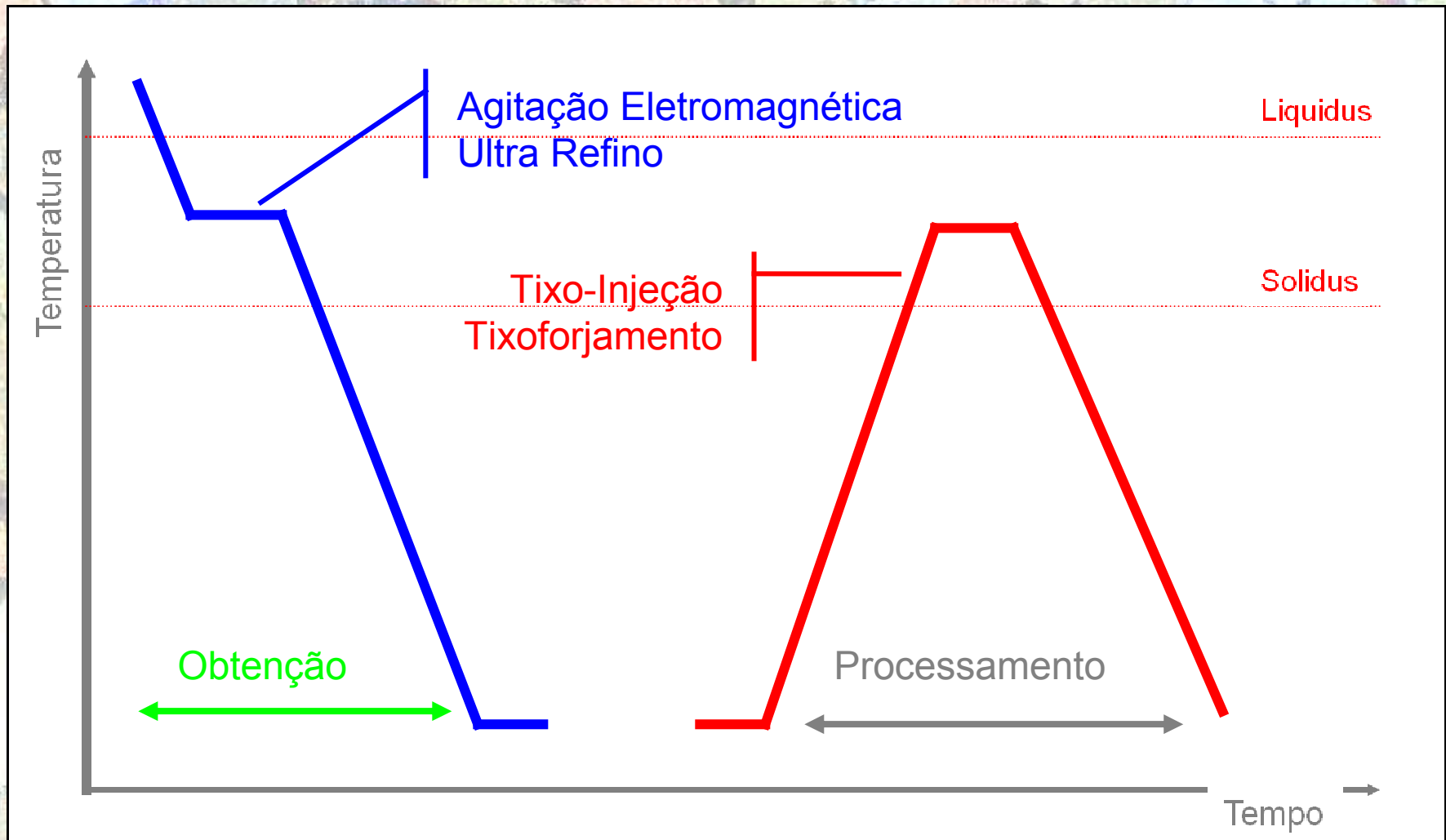
4wt%Si - 45% fs



— T=0s — T=30s — T=90s — T=210s

500 μ m

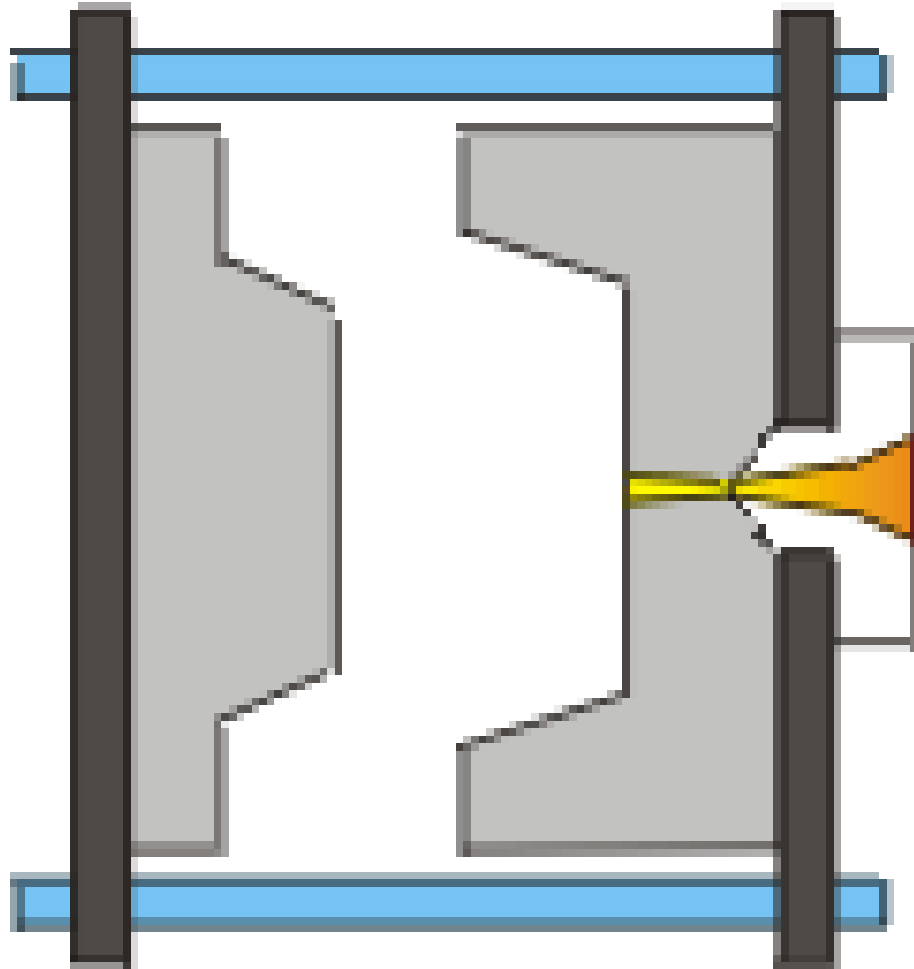
Tixoconformação



Rota – Obtenção de Peça por Tixoconformação

500 μ m

Tixoconformação



Tixo-Injeção
Segue Princípios
Básicos da
Injeção

Maior Controle
- Temperatura
- Força

500 μm

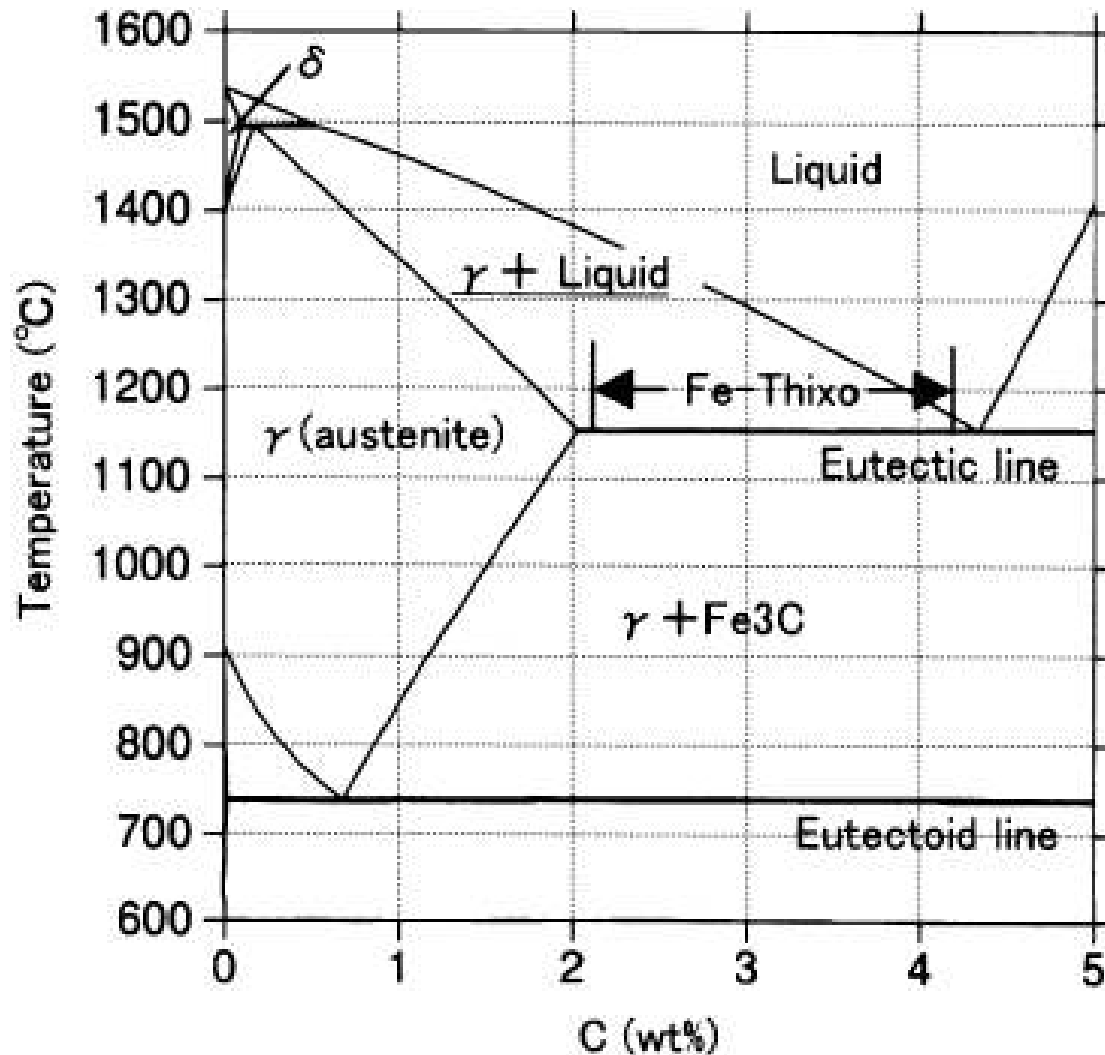
Tixocorformação



Bühler AG – Liga A356 (Al-7,0wt%Si-0,5wt%Mg)

500 μm

Tixocoformação : Obtenção



FoFo:

2,30-2,40 wt%C

1,95-2,05 wt%Si

0,06-0,70 wt%Mn

0,50-1,00 wt%Ni

0,00-0,50 wt%Cr

<0,035 wt%P

<0,040 wt%S

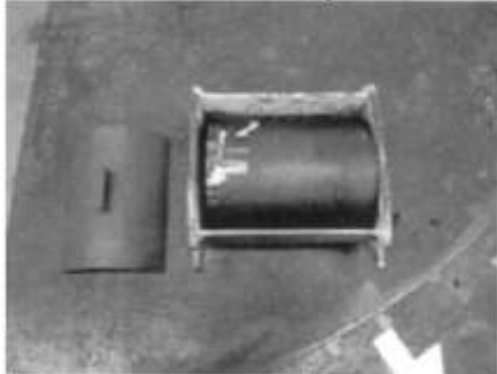
Tochigi R&D Center, Honda R&D Co., Ltd

500 μm

Tixocoformação : Obtenção



(a) Load a billet in pallet



(c) Carry it in semi-solid state



(e) Take out a product



(b) Induction heating



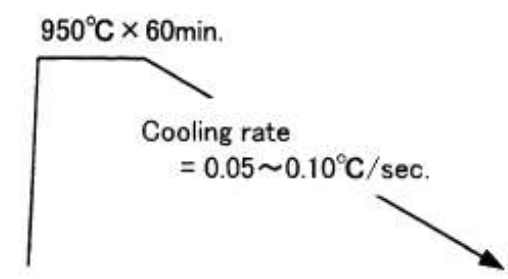
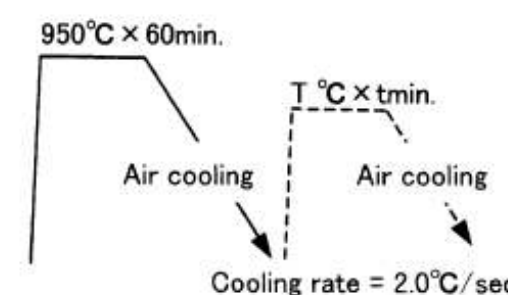
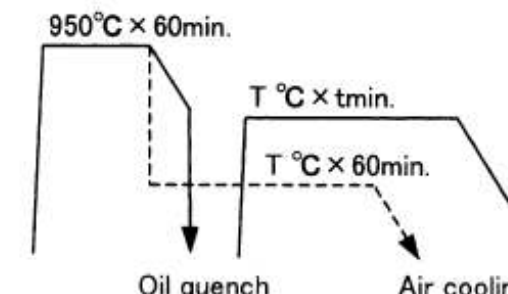
(d) Open a die after forming

Tochigi R&D Center, Honda R&D Co., Ltd

500 μm



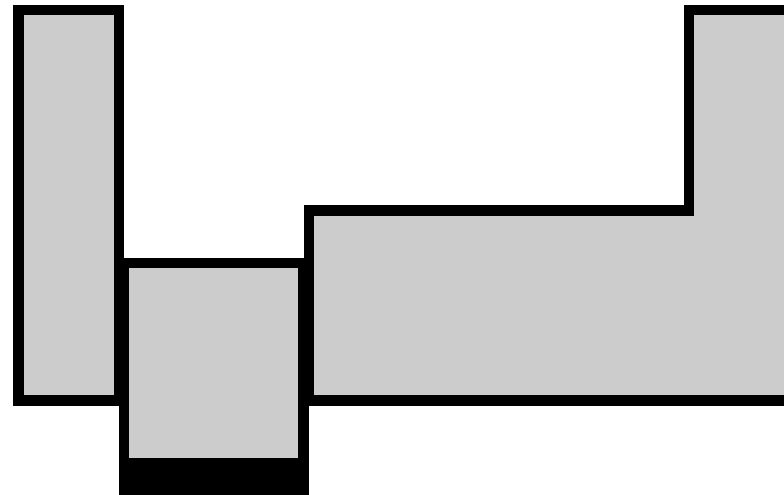
Propriedades pós
 Trat térmico:
 Cinzento:
 400-600MPa
 Nodular:
 600-800MPa
 Aço Microligado:
 600-1000MPa

Tensile strength	Heat-treatment (Hardness HB)
500~ 700MPa	i : <u>Annealing Furnace cooling</u> (HB 150-200) 
600~ 900MPa	ii : <u>Annealing Air cooling</u> / <u>Annealing(two steps)</u> (HB 200-350) 
800~ 1300MPa	iii : <u>Thermal refining</u> / <u>Austemper</u> (HB 250-350) 

Tixoconformação



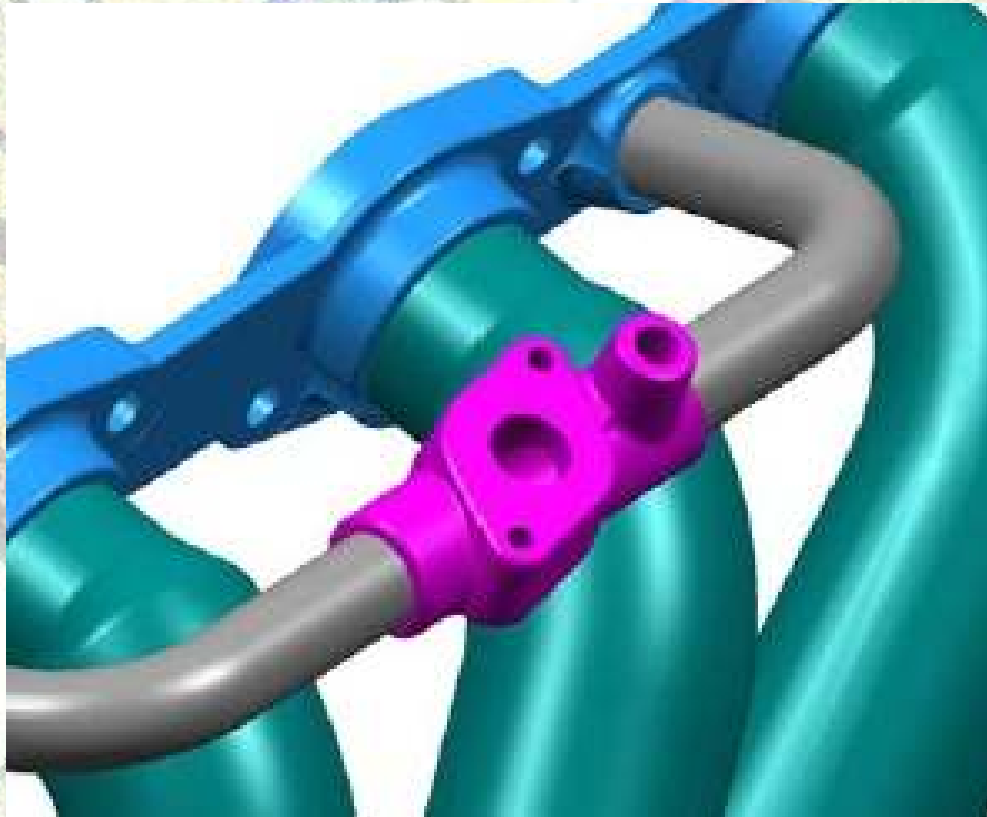
Tixoforjamento



Tixoconformação



Tixoforjamento:



**Flange Secundária
De Exaustão de Gases
De Combustão**

Bernd-Arno Behrens, *INTRODUCTION OF A FULL AUTOMATED PROCESS FOR THE PRODUCTION OF AUTOMOTIVE STEEL PARTS*, S2P Conference, Chipre, 2004

500 µm

Tixoconformação



Tixoforjamento:



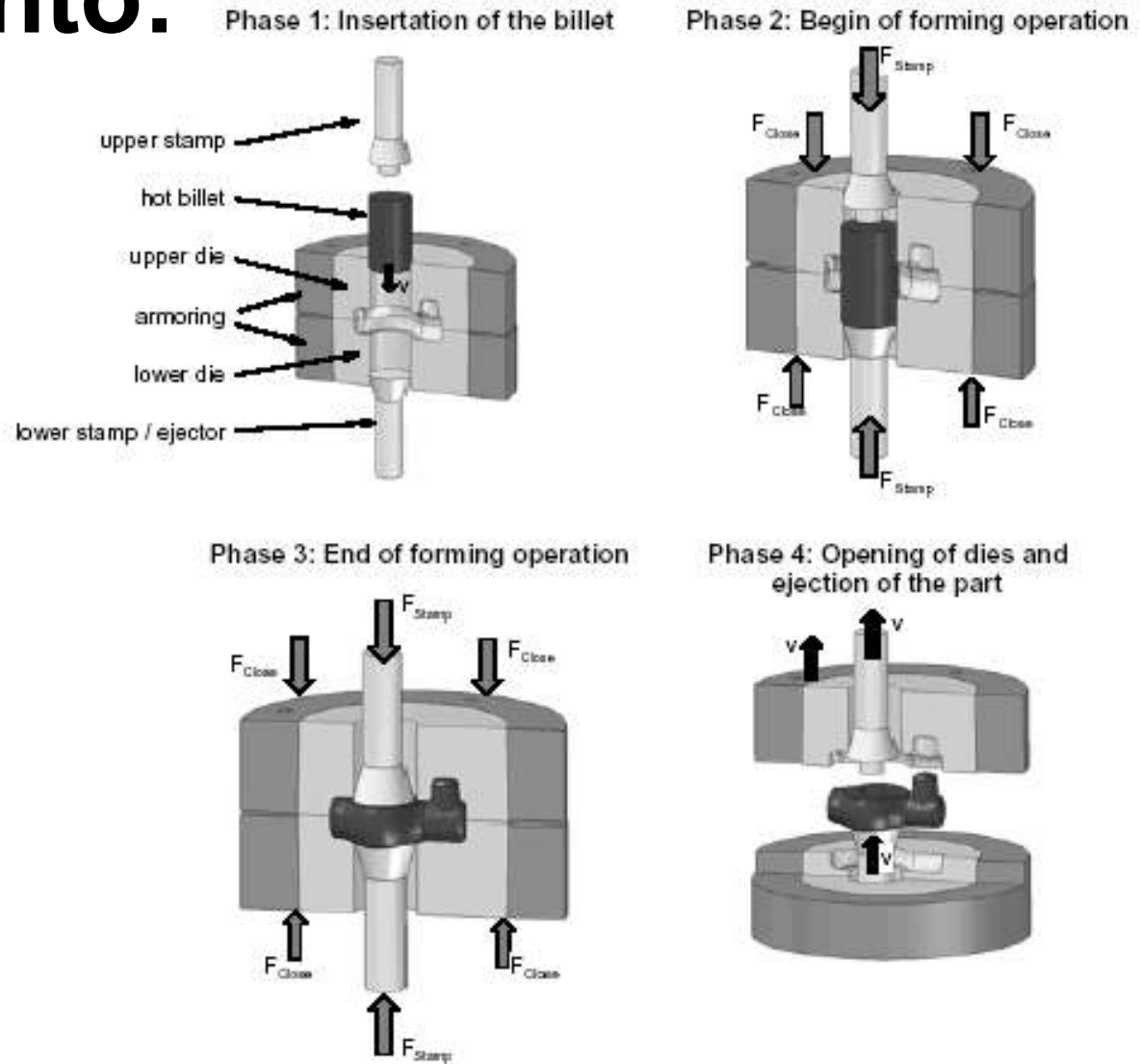
Originalmente: Forjamento em 4 Etapas.



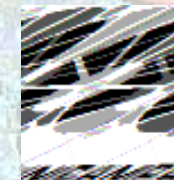
Tixoconformação



Tixoforjamento:



500 μm



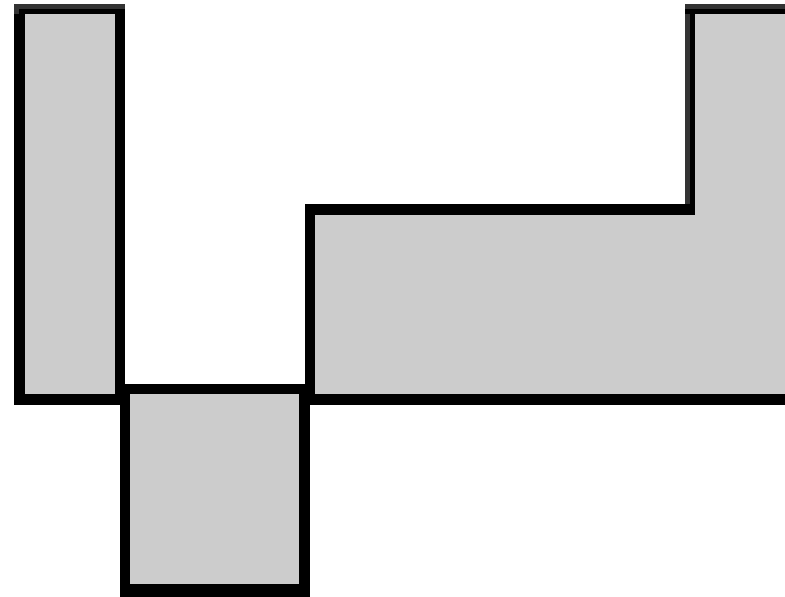
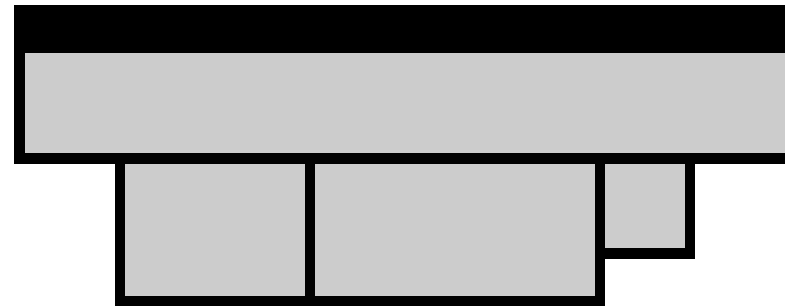
Tixoforjamento:

	Convencional	Tixoforjamento
Peso da Matéria Prima	1342g /2 Partes	305g /1
Peso Antes da Usinagem	350g /1	305g /1
Peso Após Usinagem	216g /1	191g /1
Perda de Peso	455g /1	114g /1
Número de Passos no Proc.	3	1
Força Máxima Requerida	< 870Ton/2	<50Ton/1

Tixoconformação



**Tixo-
Injeção**





Tixo-Injeção:



**Honda
CTDi Diesel
2,0l e 2,4L**

Koichi Kuroki, *ESTABLISHMENT OF A MANUFACTURING TECHNOLOGY FOR THE HIGH STRENGTH ALUMINUM CYLINDER BLOCK IN DIESEL ENGINES APPLYING A RHEOCASTING PROCESS*, S2P Conference, Chipre, 2004

500 μ m

Tixoconformação

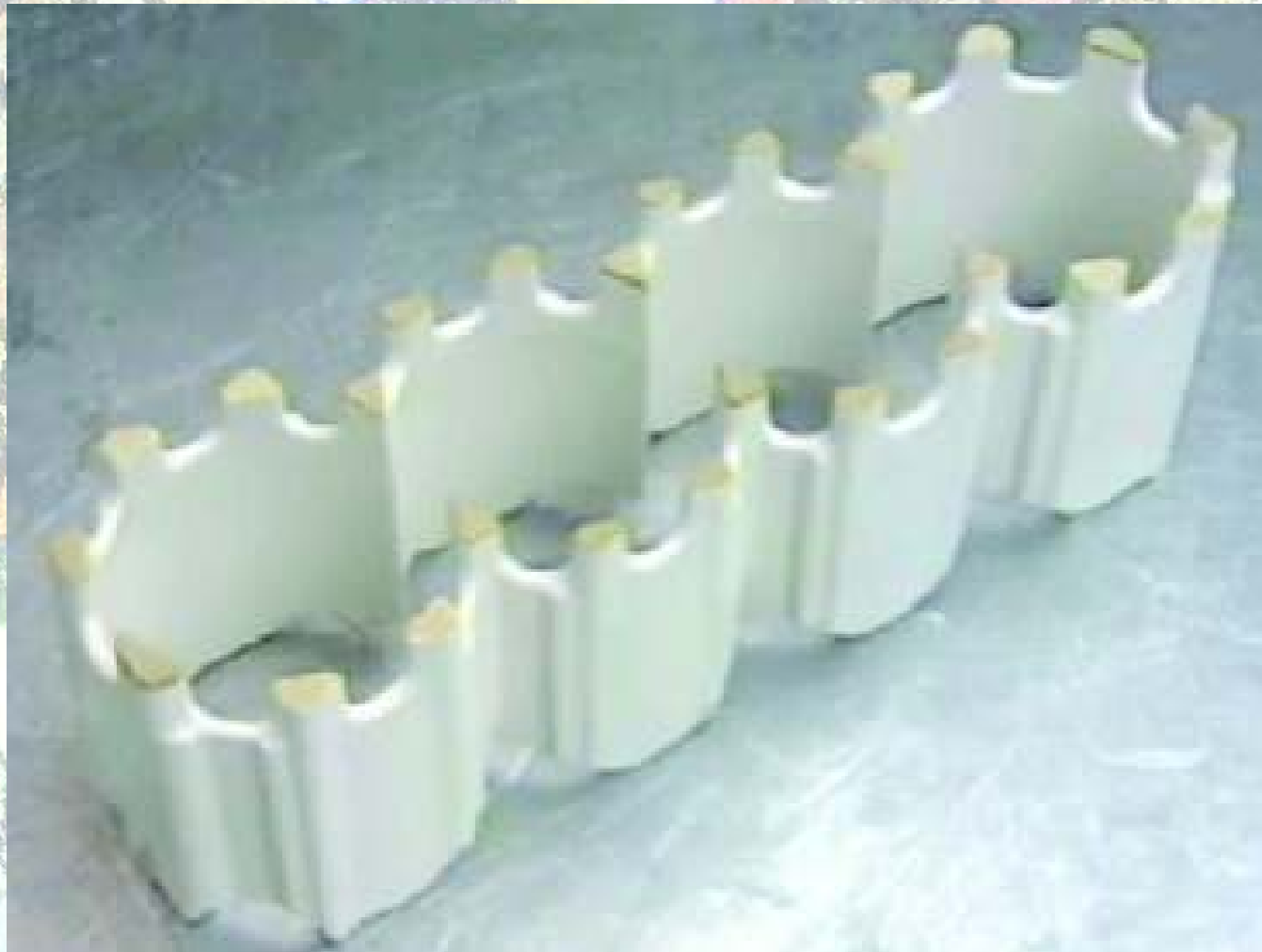


**Honda
CTDi Diesel
2,0l e 2,4L
Al-Si-Mg-Cu
15 a 25%
Fração Sólida**

500 μ m

Tixoconformação

Tixo-Injeção:



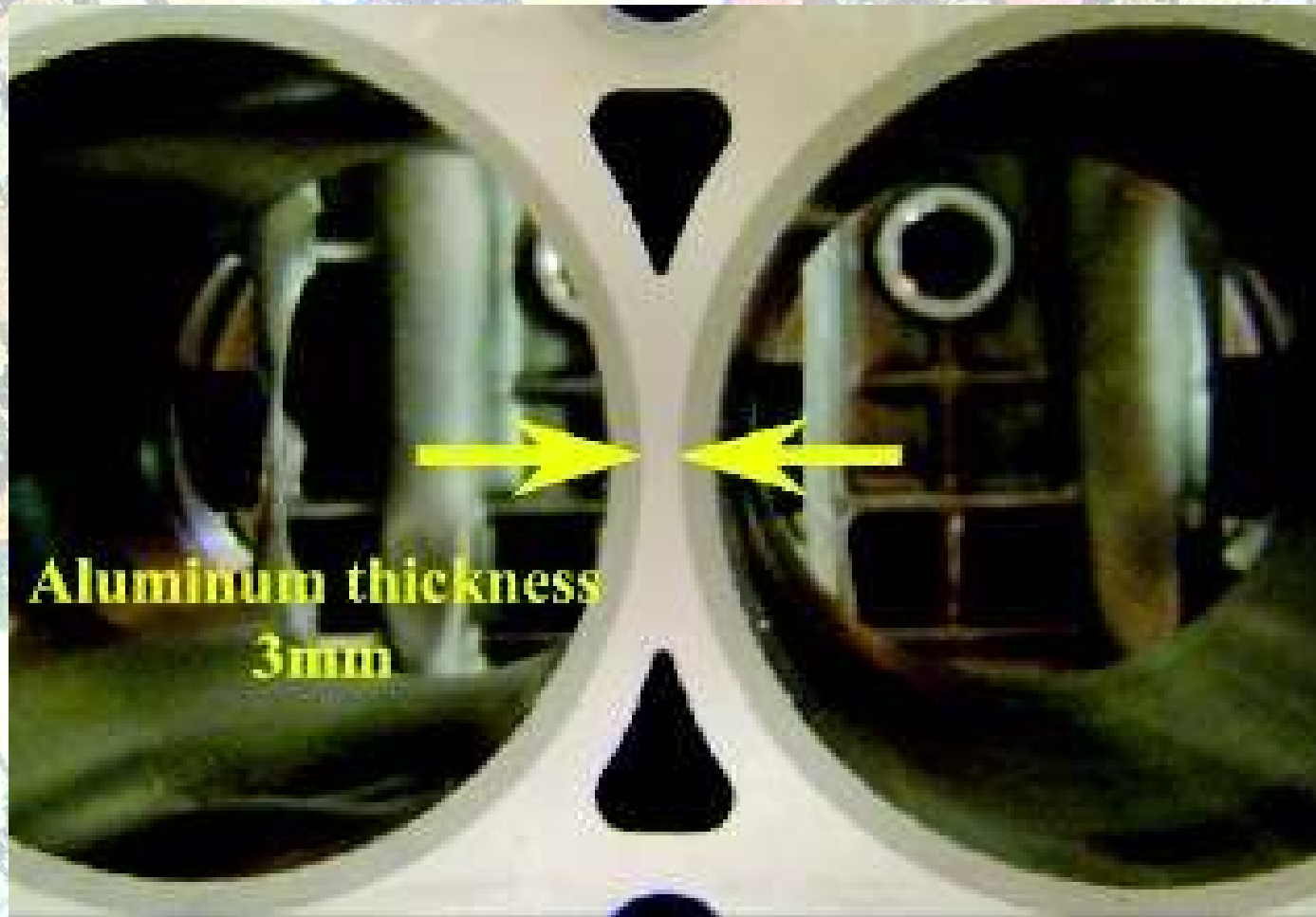
Honda
CTDi Diesel
2,0l e 2,4L
Al-Si-Mg-Cu
15 a 25%
Fração Sólida

500 μm

Tixoconformação



Tixo-Injeção:



Honda
CTDi Diesel
2,0l e 2,4L
Al-Si-Mg-Cu
15 a 25%
Fração Sólida

500 μm

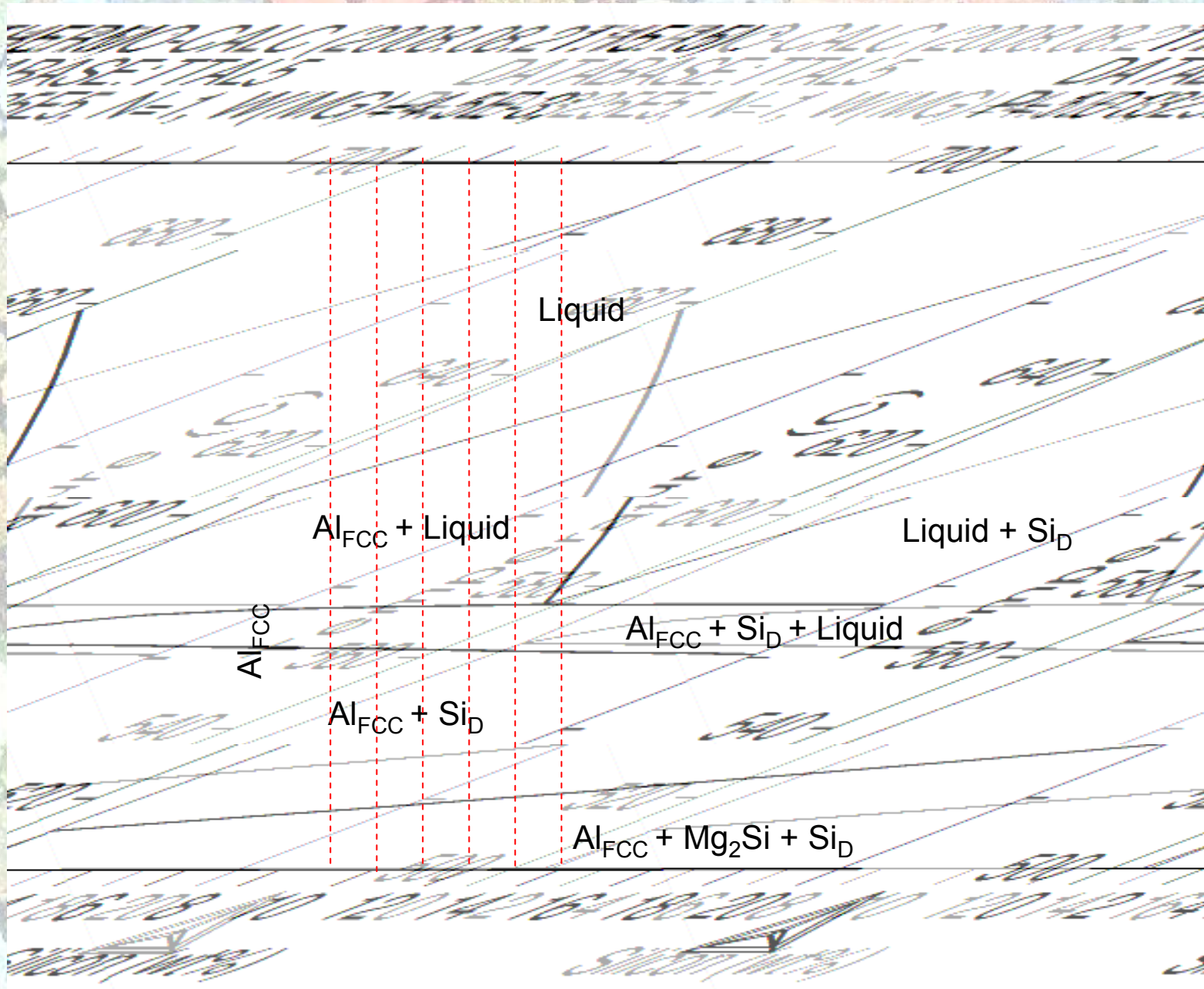


Projetos em Andamento

Eugenio Jose Zoqui
DEF-FEM-Unicamp

500 μm

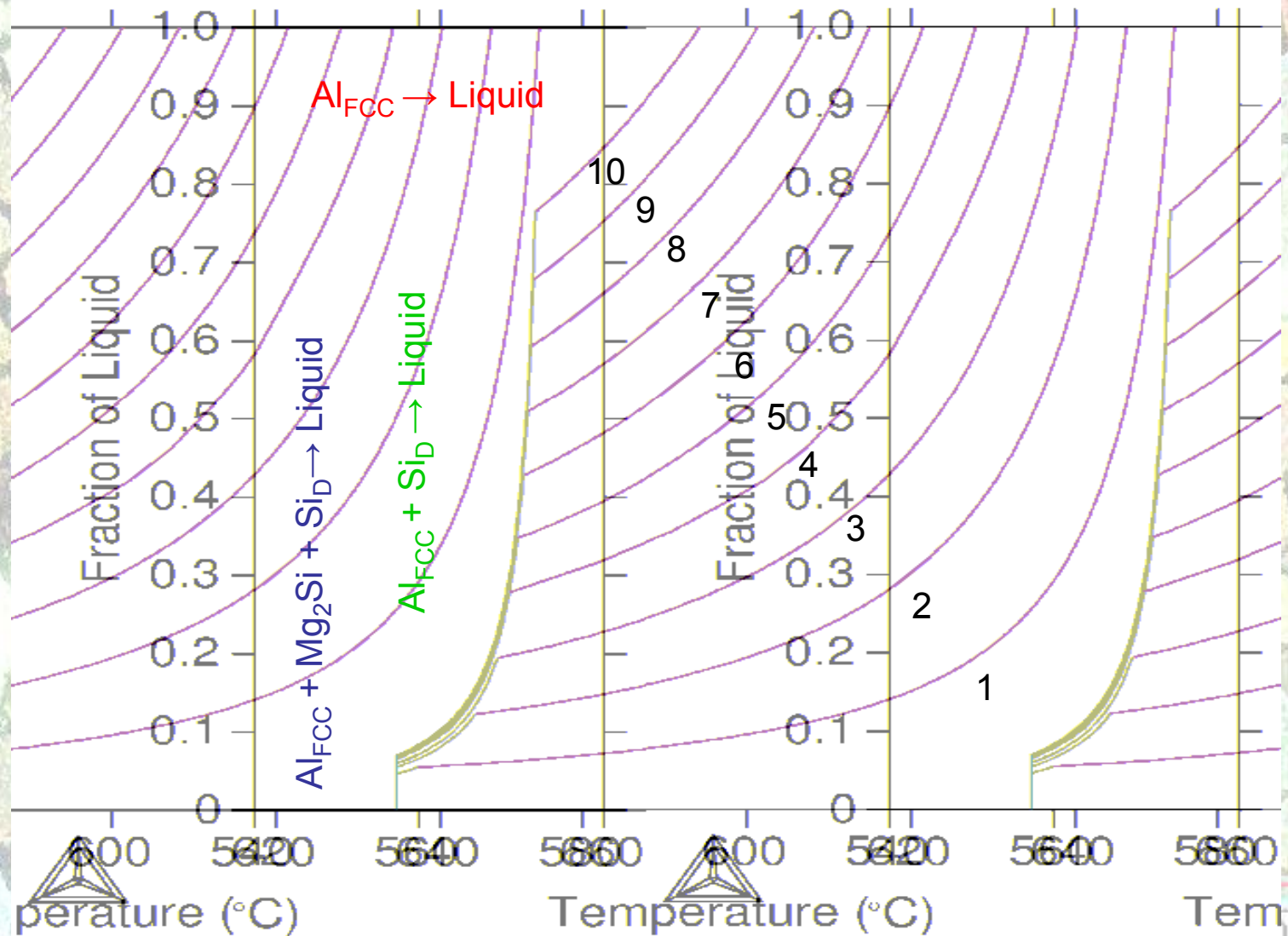
Porquê Baixo-Silício?



Porquê Baixo-Silício?



3.27 THERMOCALC (2008.08.27) THERMOCALC (2008.08.27)
 DATABASE:TTAL5 DATABASE:TTAL5



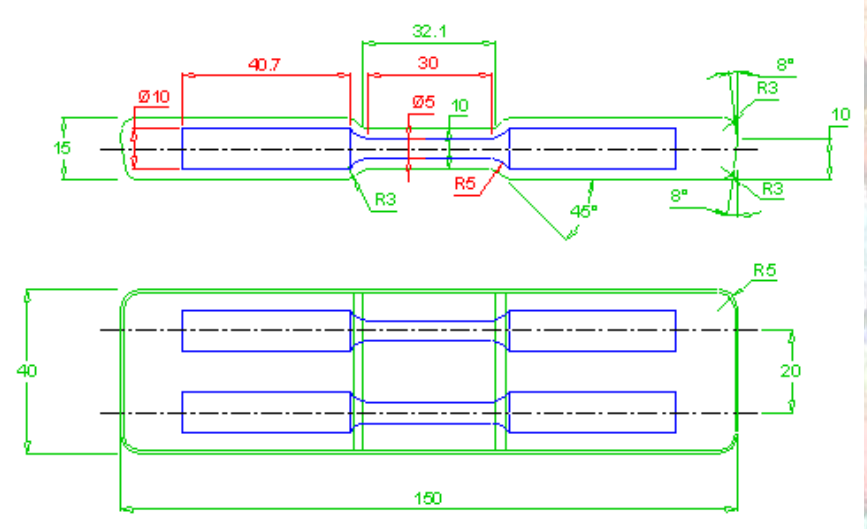
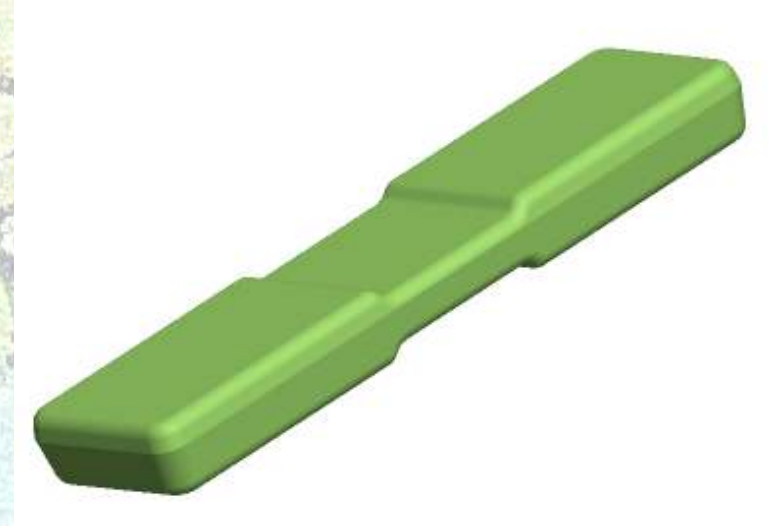
10 μm

Tixoforjamento



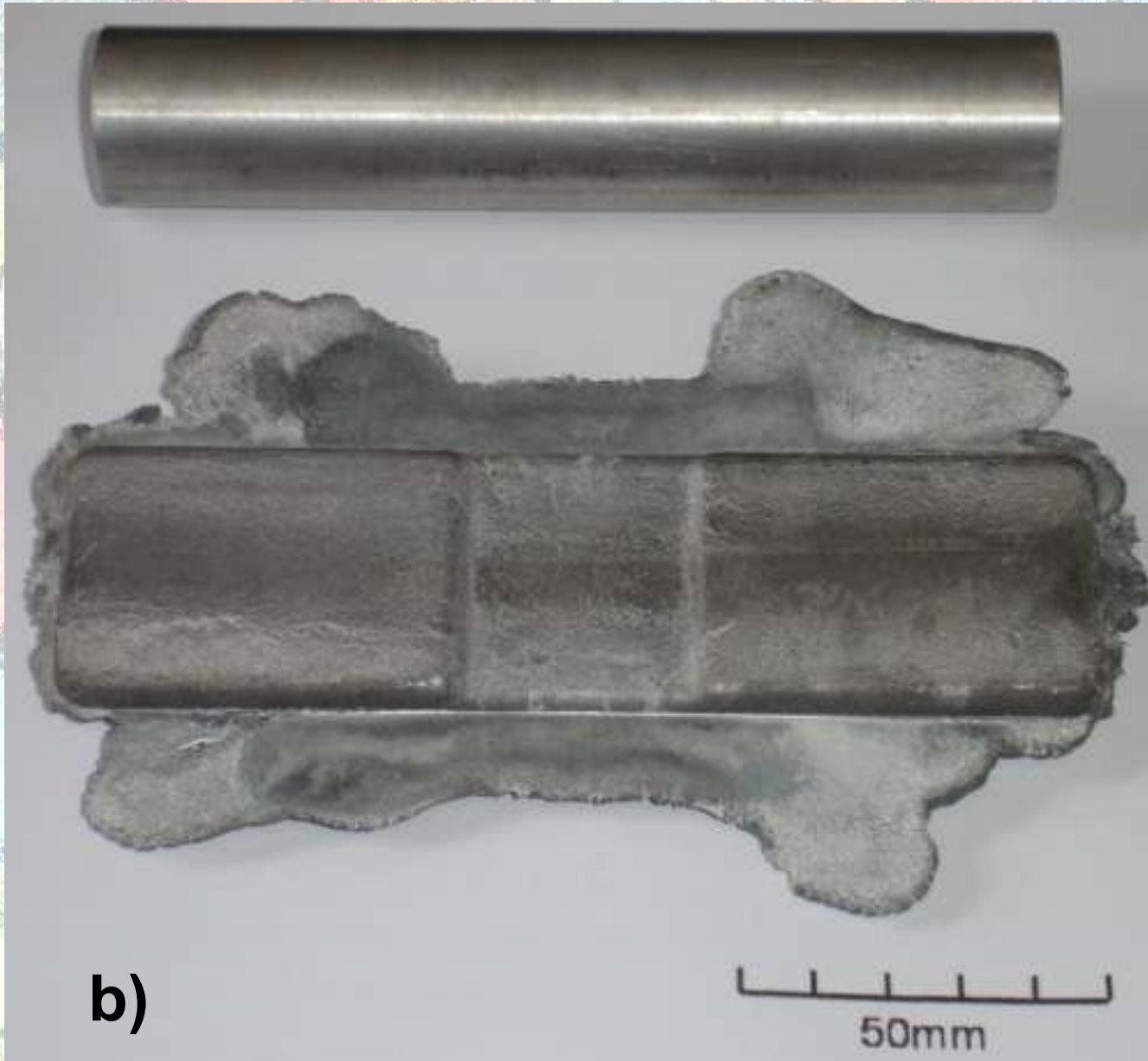
Celula de Carga

a)



500 μm

Tixoforjamento

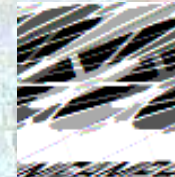


b)

50mm

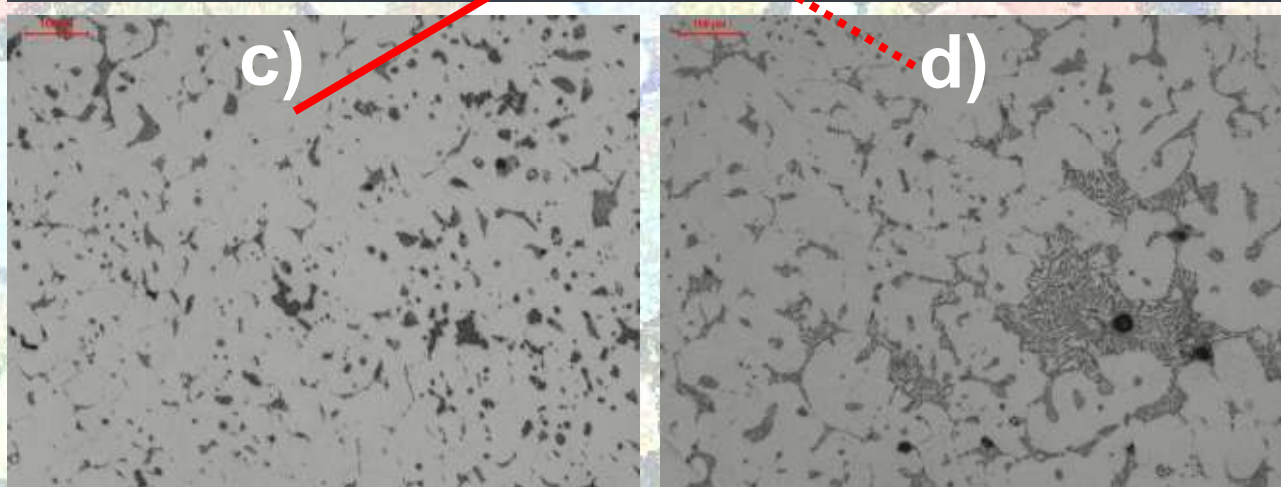
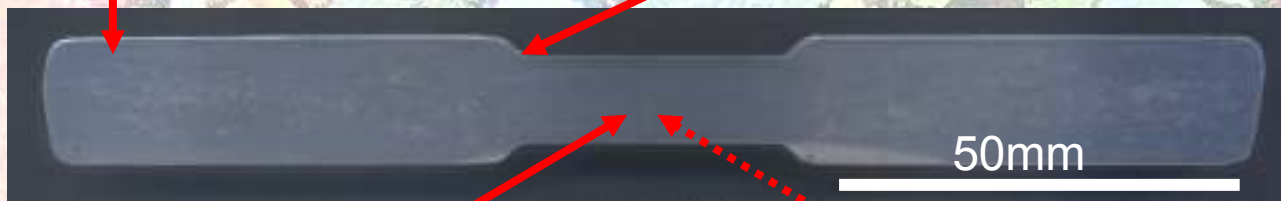
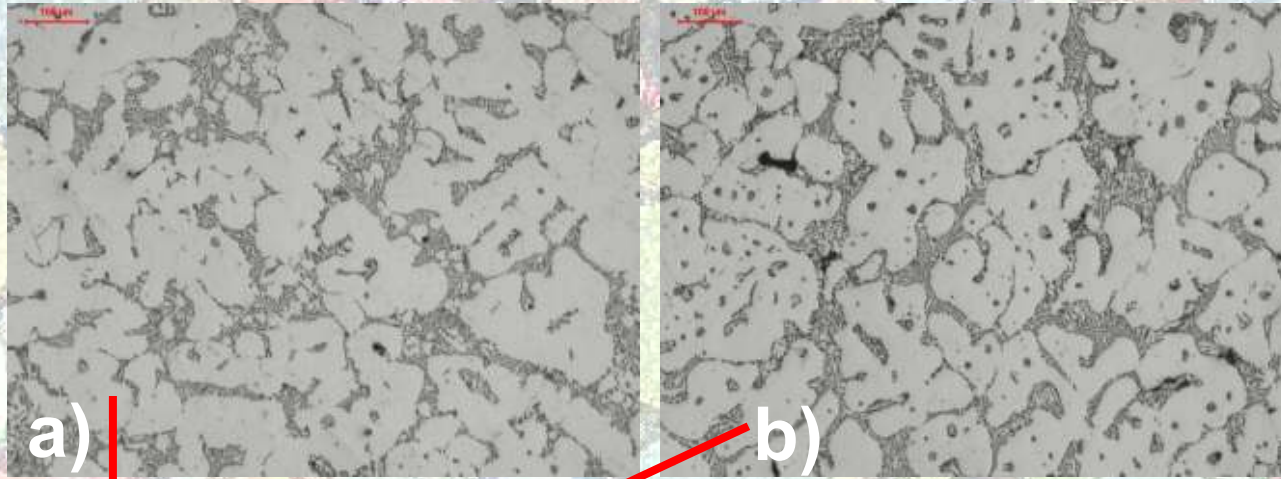
500 μm

Tixoforjamento



500 μm

Tixoforjamento




500 μm



Tab 3 – Propriedades de de Peças Tixoforjadas em Prensa Excêntrica

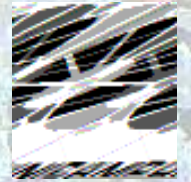
Liga	Tensão de Escoamento (MPa)		Alongamento (%)	
	45% f_s	60% f_s	45% f_s	60% f_s
Al-1wt%Si-0.5wt%Mg	72	70	1.5	< 1.0
Al-2wt%Si-0.5wt%Mg	100	104	3.1	2.7
Al-4wt%Si-0.5wt%Mg	115	108	4.2	3.0
Al-7wt%Si-0.5wt%Mg	122	116	4.4	3.5

**Comportamento Similar:
4wt%Si e 7wt%Si**

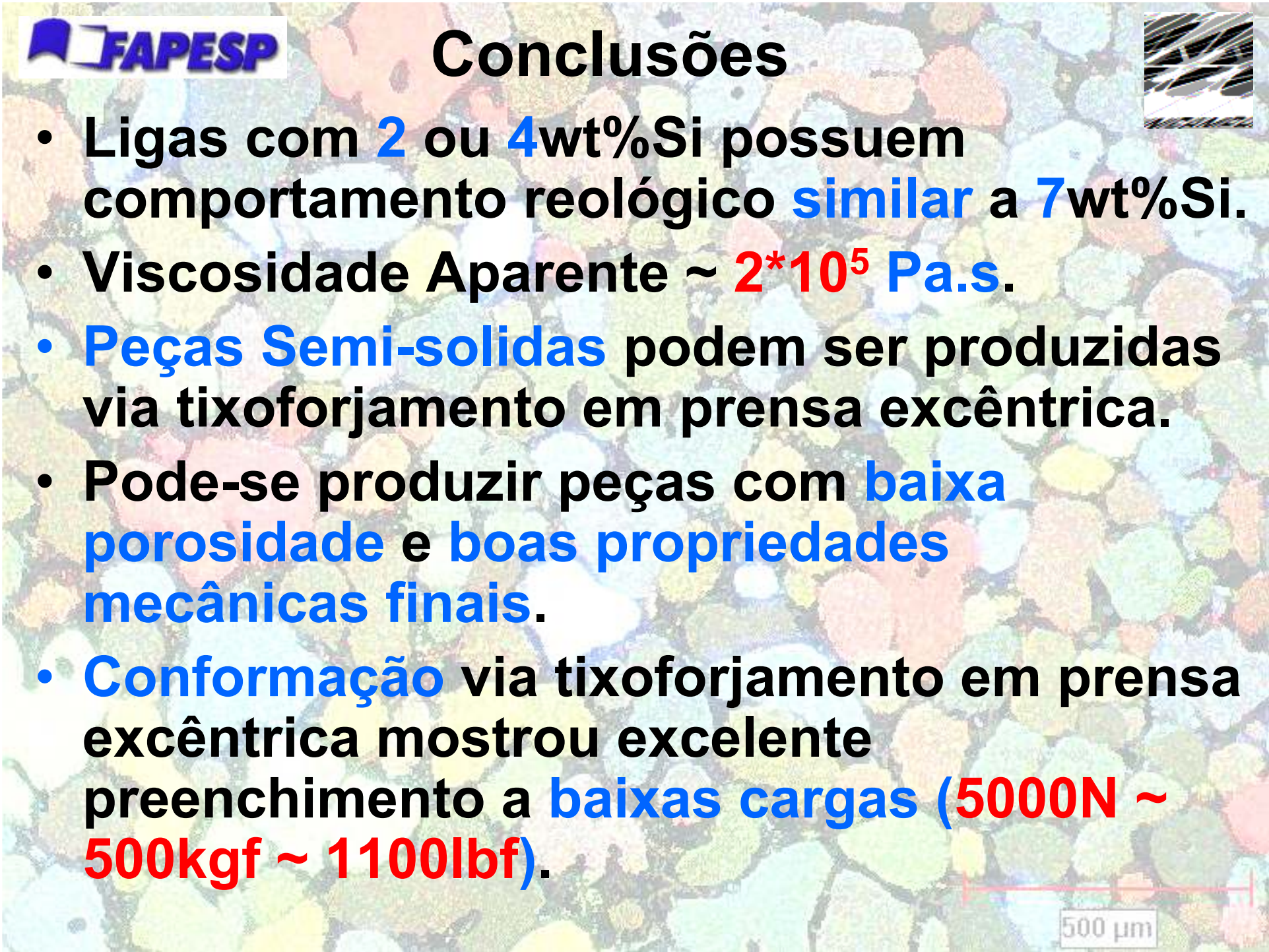


500 μm

Conclusões



- Ligas com **2** ou **4wt%Si** possuem comportamento reológico **similar** a **7wt%Si**.
- Viscosidade Aparente $\sim 2 \cdot 10^5$ Pa.s.
- **Peças Semi-solidas** podem ser produzidas via tixoforjamento em prensa excêntrica.
- Pode-se produzir peças com **baixa porosidade** e **boas propriedades mecânicas finais**.
- **Conformação** via tixoforjamento em prensa excêntrica mostrou excelente preenchimento a **baixas cargas (5000N \sim 500kgf \sim 1100lbf)**.



500 μ m

Obrigado

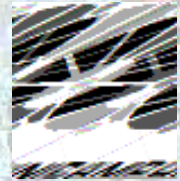


Image © 2005 DigitalGlobe

© 2005 Google

500 μ m